

CERTIFICATE OF LOCATION OF GOVERNMENT CORNER

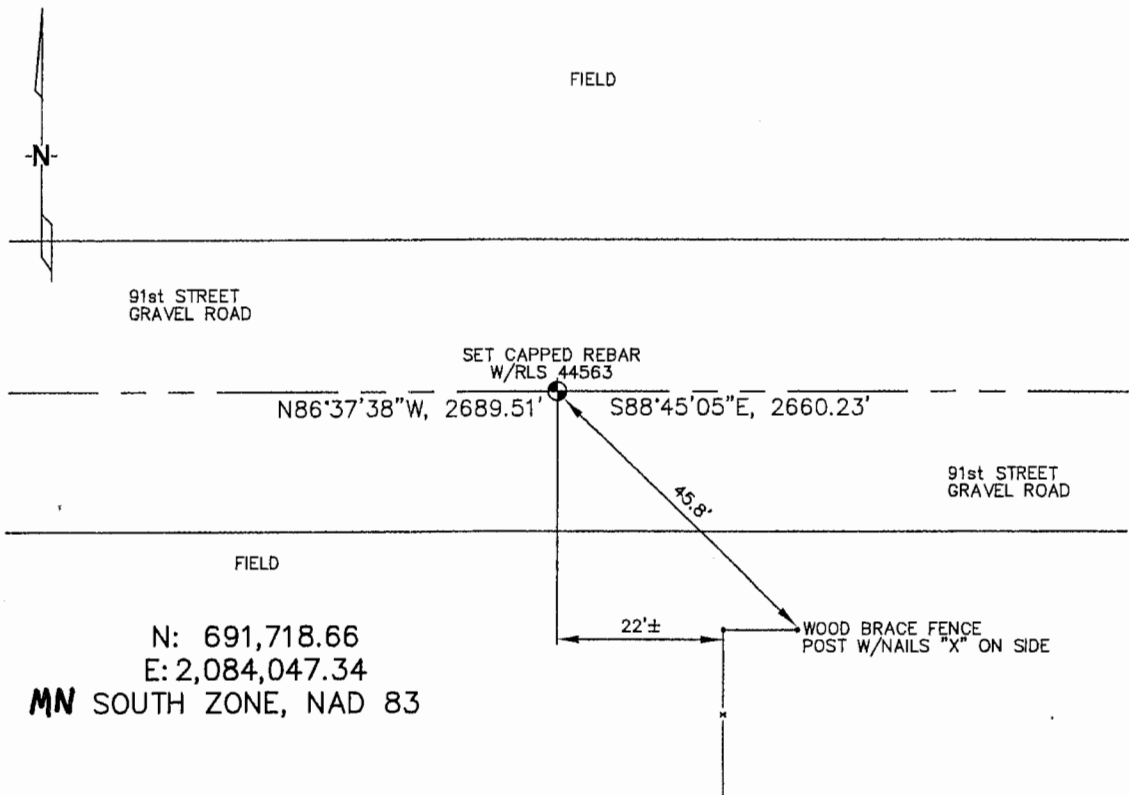
SOUTH 1/4 Corner of Section 18, Township 106, Range 43, 5TH P.M.

STATE OF MINNESOTA, County of MURRAY

At the corner location shown on the sketch :

- On _____ found _____
- left monument as found, lowered monument, removed monument (explain)
- On 3/23/2006 set 5/8" REBAR W/ CAP: RLS 44563.

Sketch of reference ties



Statement of evidence relative to this corner location is on back page

I hereby certify that this document and the data contained herein was prepared by me or under my direct supervision.

Thomas V. Zell 5/3/06
Signature Date

Registration No. 44563

- Land Surveyor, Professional Engineer
- County Surveyor, County Engineer

OFFICE OF THE COUNTY RECORDER

County of _____

SEP 28 2006

I hereby certify that this document was filed in the Co. Recorders office at _____ M. on the _____ day of _____ A.D. 20

County Recorder James V. Johnson
By _____, Deputy

DOCUMENT NO. _____

STATEMENT OF EVIDENCE:

SOUTH 1/4 CORNER, SECTION 18, T. 106 N., R. 43 W.,
MURRAY COUNTY, MINNESOTA

1866 J.W. BISHOP, U.S. DEPUTY SURVEYOR, MONUMENTED CORNER.

3/23/2006 ULTEIG ENGINEERS, INC., SURVEY CREW, BRIAN PAYNE-PARTY CHIEF
FOUND NOTHING. SET 5/8" REBAR WITH CAP: RLS 44563.
TIES: SE-45.8' TO NAILED "X" ON SIDE OF WOOD, BRACE IN FENCE;
E-2660.23' TO SE CORNER, SECTION 18;
W-~~25~~89.51' TO SW CORNER, SECTION 18.